

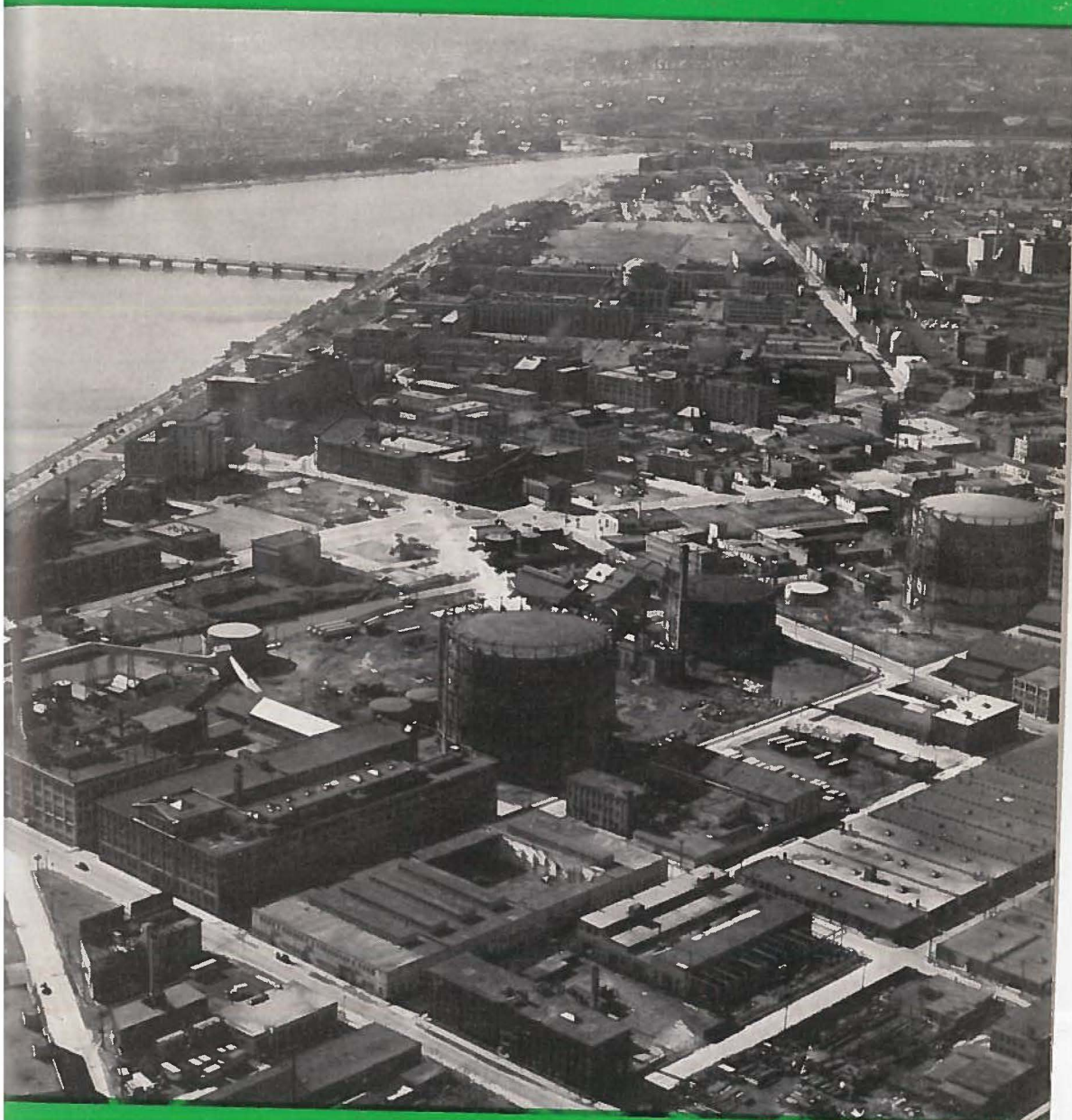
The BULLETIN of the
NATIONAL DISTRICT HEATING ASSOCIATION

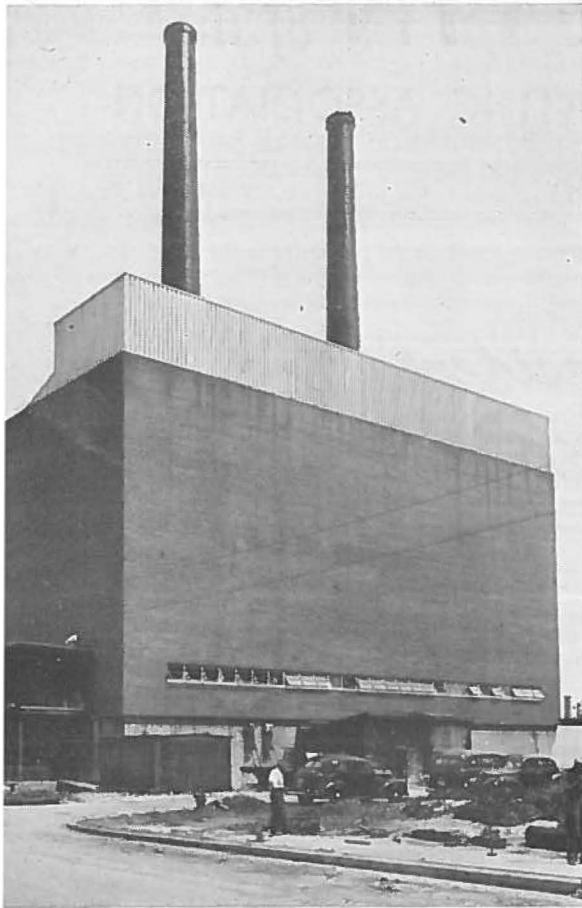
ORGANIZED 1909

Vol. XXXVII No. 1

October, 1951

\$1.00 Per Year





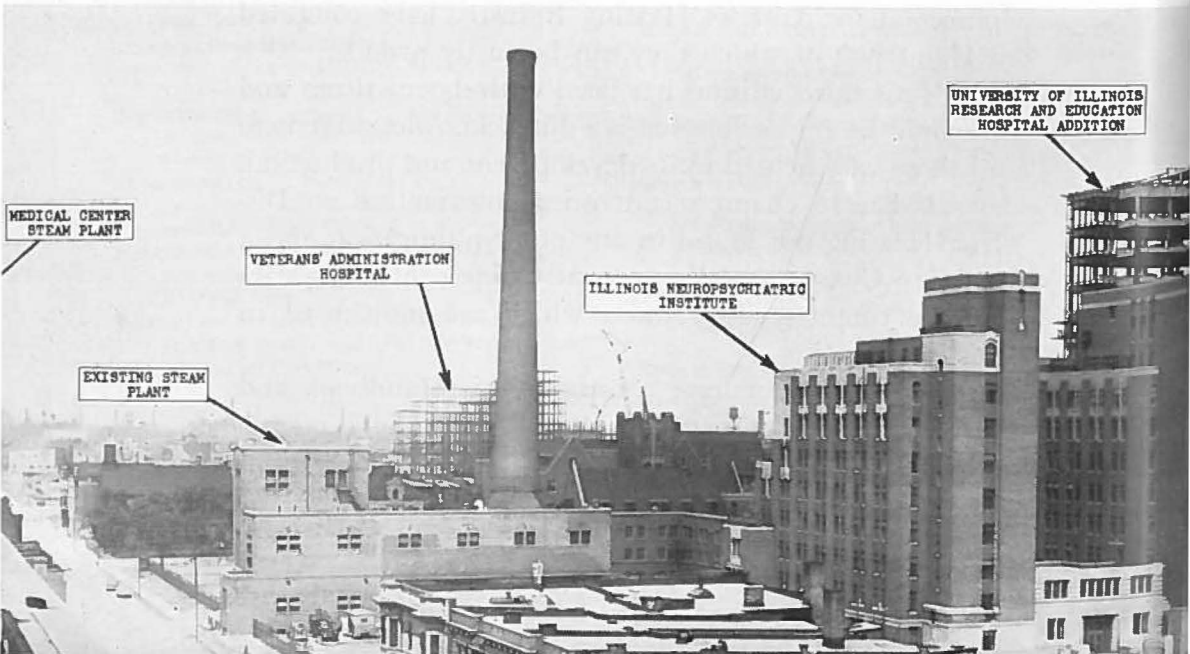
Steam— *but no kilowatts*

**Commonwealth Edison
Company erects new steam plant
to serve University of Illinois***

Located at Taylor Street and Hermitage Avenue, on the south edge of Chicago's west side medical center, the nearly completed steam plant is already in partial service.

*Reprinted with the permission of the Commonwealth Edison Company from the "Edison Round Table."

Below is the medical center as it appears today. The Medical Center Steam Company, at extreme left, will use its entire output to supply central steam service to the area.



THE newest steam plant in Chicago went into operation during July. It has a steam capacity equal to that of a small generating station, but will produce no electricity at all. Its entire output supplies central steam service in the Medical Center District on Chicago's near west side.

At the request of the University of Illinois, our Company went into this project in June, 1949. At that time Medical Center Steam Company was formed as a subsidiary of Commonwealth Edison Company to erect a steam plant which would supply steam-heating service to the University of Illinois and, through it, to other institutions in the Medical Center District.

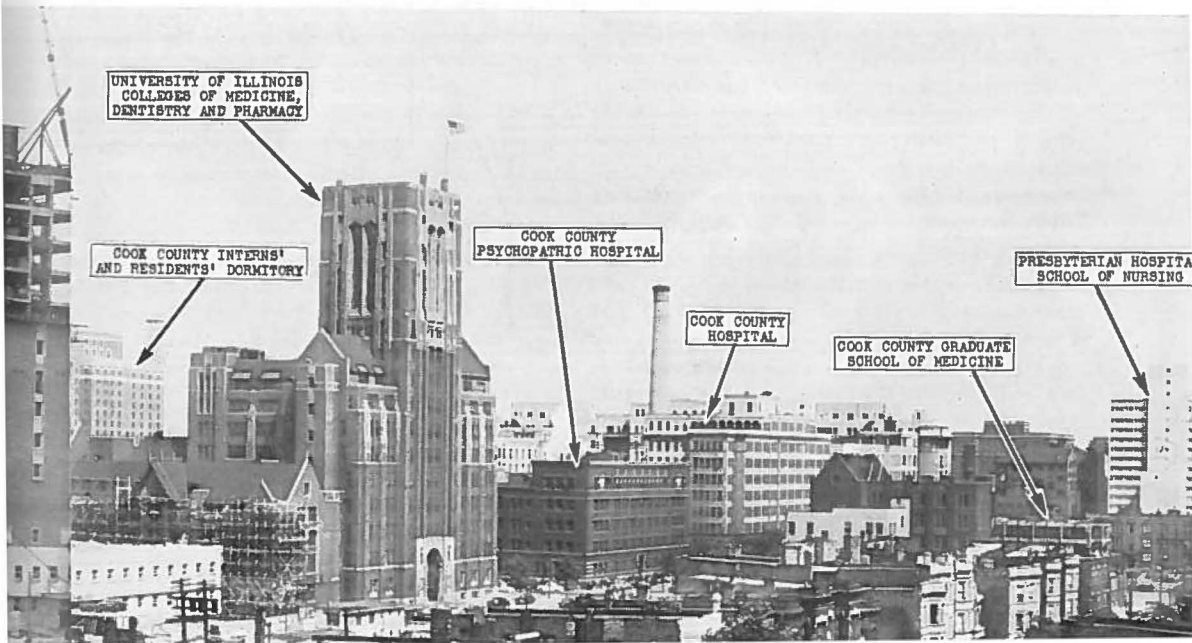
The University's own steam plant had become both obsolete and inadequate. When state funds for new facilities were not available, it was decided to build the steam plant and its related distribution system with private capital.

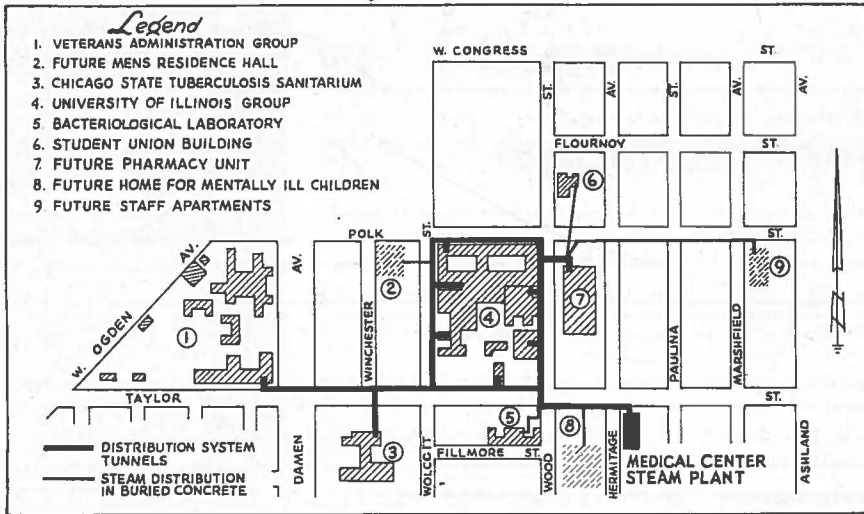
The steam company is an Illinois public utility. Its charges for steam will be only enough to cover operating and investment costs on a 30-year plan. The University will pay for the entire steam output of the plant and will bill the other institutions for steam used by them. At the end of the 30-year period the property will be transferred to the University of Illinois.

The Medical Center District is an area of about 305 acres within the City of Chicago, bounded by Ashland Boulevard, Congress Street, Oakley Boulevard and Roosevelt Road. Within the area are presently located three hospitals, containing 428 beds. Also, there are under construction a 500-bed Veterans' Administration general hospital, a 411-bed University of Illinois general hospital addition, a 483-bed Tuberculosis Sanitarium,



This view inside the nearly completed plant shows a control panel (at right), chain grates (left) and a chute (above) from a coal bunker.





all of which will use steam from the new plant.

Additional buildings contemplated for this area in the immediate future include a regional office building for the Veterans' Administration, Home for Mentally Ill Children maintained by the Department of Public Welfare and three University of Illinois buildings. These are a men's residence hall, a staff apartment building, and a new east wing for the Dental-Medical Pharmacy Building. The map shows the principal buildings of the Medical Center District which will be served by the steam plant.

The steam plant building is of steel, concrete and brick construction. It houses three steam generating units and necessary auxiliaries with a total steam generating capacity of 270,000 pounds per hour. A reinforced concrete wall adjacent to the plant building encloses a coal storage yard with a capacity of approximately 7,000 tons.

Steam to be distributed to hospitals and other buildings in the district where continuity of service is essential is delivered through piping located in reinforced concrete, walk-through tunnels with inside dimensions of approximately seven feet by eight feet. For buildings where continuity of service is of less importance, steam is supplied through piping in buried under-

ground conduits. The total length of concrete tunnels is approximately 4,600 lineal feet, and the length of conduit runs is approximately 2,200 lineal feet.

The maximum steam load carried by the station will require only two steam generating units. However, for hospital service it is absolutely essential that steam supply be uninterrupted at all times. To assure continuous service, it was necessary to install the third steam generating unit.

Construction of the plant was started in July, 1950, and first commercial operation began last month. It is expected that all construction work will be completed by December of this year.

Although the University of Illinois will furnish personnel and other services for operating the steam plant, the steam company will be responsible for its operation.

The executive staff of Medical Center Steam Company is composed of officers of the Edison Company. The engineering and construction work for the project has been handled by Stone and Webster Corporation. R. B. Freston, Engineer, served as the Company's engineering coordinator and D. Robert Bower, Assistant Secretary and Assistant Treasurer, has been the financial coordinator.