

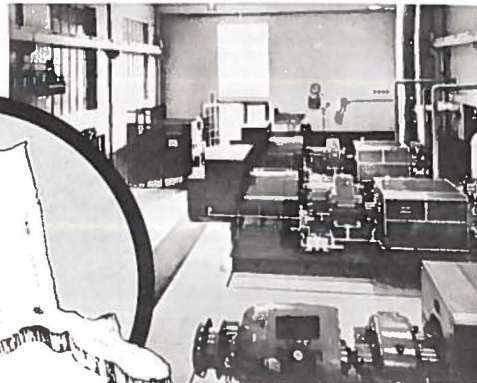


DISTRICT HEATING

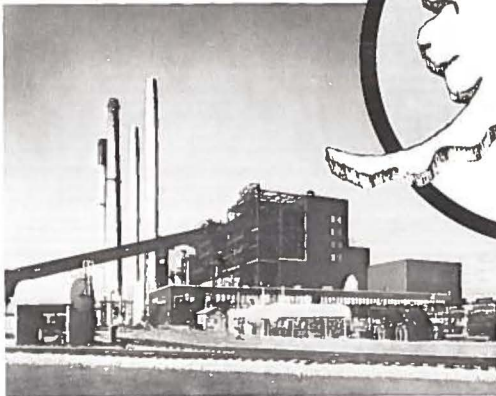
JANUARY-FEBRUARY-MARCH 1976

VOLUME 61-NUMBER 3

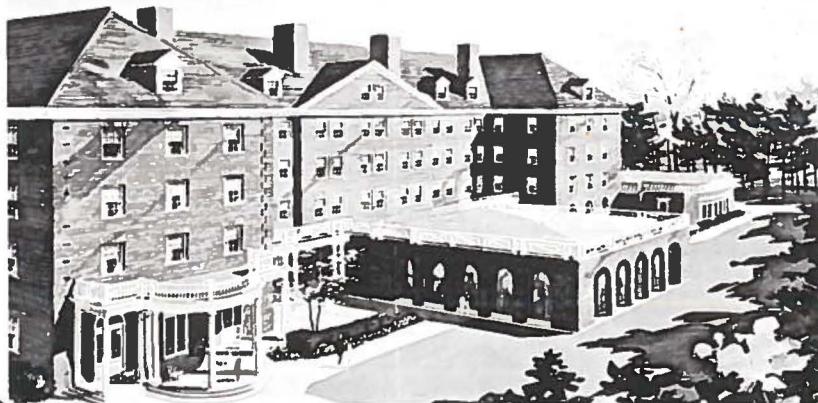
Alaska24



Hanover, New Hampshire10



St. Louis, Missouri16



Saratoga Springs, New York4

European Municipal Incineration Plants With Heat Utilization

Researched and Compiled By:

A. Ernest Haseler, C. Eng., F.I.E.E., F.I.H.V.E., F.F.B.
International Consultant, Croydon, England

Mr. Haseler's compilation is a corrected and updated version of the data printed in the January-February-March 1975 issue of *District Heating*.

| Term or Name | Abbreviation | Term or Name | Abbreviation |
|---|--------------|---|---------------|
| Chain grate stoker | Chain | Combustion Engineering Company | C.E.C. |
| District heating | Dist Htg | Durr Werke/Vulkan | Durr W/V |
| Hot water | HW | Kohlenscheidungsgesellschaft | KSG |
| Power generation | Power Gen | Rotterdamsche Droogdok Maatschappij NV | RDM |
| Josef Martin GMBH | Martin | De Bartolomeis/Venien | De Bart/V |
| Bruun & Sorensen A/S | B & S | Fonderie e Officine di Saronno | F.O.S. |
| E. Rasmussen A/S | Rasmussen | Esslingen Maschinenfabrik | E.M.F. |
| Helsingor Skibsvaerft & Maskinbyggeri | H. S. & M. | Plibrico Eldfast Material AB | P.E.M. |
| Vereinigte Kesselwerke | VKW | Sulzer-Martin | Sulzer-Martin |
| Construction Navales et Industrielles de la Mediterranee | C.N.I.M. | Head Wrightson Process Engineering | H.W.P. |
| | | Motherwell Bridge Tacol Ltd. | M.B.T. |

| Location | Manufacturer | Grate | Start of Operation | No. Units x Capacity | Capacity Tons/Day | Heat Utilization |
|---------------------|--------------|------------------|-----------------------|-------------------------|----------------------|------------------|
| AUSTRIA | | | | | | |
| Vienna | Von Roll AG | Von Roll | 1963 | 3 x 8 | 600 | Steam/Heating |
| Vienna-Spittelau | Martin | Martin | 1971 | 2 x 15 | 720 | Steam/Dist Htg |
| BELGIUM | | | | | | |
| Brussels-Schaerbeck | Von Roll AG | Von Roll | 1957 | 2 x 8 | 400 | Steam/Power Gen |
| DENMARK | | | | | | |
| Aalborg | Rasmussen | Flynn & Emrich | 1968 | 1 x 5.5 | 312 | HW/Dist Htg |
| Aalborg | Volund A/S | Volund | 1972 | 1 x 7.5 | 312 | HW/Dist Htg |
| Aarhus-Tilst | B & S | B & S | 1969 | 1 x 0.75 | 18 | HW/Dist Htg |
| Aarhus-Nord | B & S | B & S | 1977 | 3 x 8 | 576 | HW/Dist Htg |
| Albertslund | B & S | B & S/Destructor | 1968 | 1 x 3.5 | 180 | HW/Dist Htg |
| Albertslund | B & S | B & S | 1974 | 1 x 4.0 | 180 | HW/Dist Htg |
| Brondbyerne | B & S | B & S | 1971 | 1 x 4.0 | 96 | HW/Dist Htg |

| | | | | | | |
|-------------------|-------------|------------------|------|---------|------|----------------|
| Copenhagen-Amager | Volund A/S | Volund | 1970 | 3 x 12 | 864 | HW/Dist Htg |
| Copenhagen-West | Volund A/S | Volund | 1970 | 3 x 12 | 1200 | HW/Dist Htg |
| Copenhagen-West | Volund A/S | Volund | 1976 | 1 x 14 | 1200 | HW/Dist Htg |
| Ebeltoft | Rasmussen | _____ | 1967 | 1 x 1.0 | 24 | HW/Dist Htg |
| Fredericia | Rasmussen | Flynn & Emrich | 1966 | 2 x 2.3 | 110 | HW/Dist Htg |
| Frederiksberg | Volund A/S | Volund | 1934 | 2 x 6.0 | 288 | Steam/Dist Htg |
| Frederikshavn | B & S | B & S/Destructor | 1965 | 1 x 3.0 | 168 | HW/Dist Htg |
| Frederikshavn | B & S | B & S | 1971 | 1 x 4.0 | 168 | HW/Dist Htg |
| Haderslev | Volund A/S | Volund | 1966 | 1 x 3.0 | 180 | HW/Dist Htg |
| Haderslev | Volund A/S | Volund | 1975 | 1 x 4.5 | 180 | HW/Dist Htg |
| Helsingor | H.S. & M. | Flynn & Emrich | 1967 | 1 x 4.5 | 252 | HW/Dist Htg |
| Helsingor | H.S. & M. | Flynn & Emrich | 1975 | 1 x 6.0 | 252 | HW/Dist Htg |
| Herning | B & S | B & S | 1971 | 1 x 3.0 | 168 | HW/Dist Htg |
| Herning | B & S | B & S | 1973 | 1 x 4.0 | 168 | HW/Dist Htg |
| Hjorring | Volund A/S | Volund | 1965 | 1 x 2.5 | 156 | HW/Dist Htg |
| Hjorring | Volund A/S | Volund | 1977 | 1 x 4.0 | 156 | HW/Dist Htg |
| Holstebro | B & S | B & S | 1970 | 1 x 3.0 | 168 | HW/Dist Htg |
| Holstebro | B & S | B & S | 1975 | 1 x 4.0 | 168 | HW/Dist Htg |
| Horsens | B & S | B & S | 1974 | 1 x 5.0 | 120 | Sludge Drying |
| Horsholm | Volund A/S | Volund | 1969 | 2 x 3.0 | 144 | HW/Dist Htg |
| Kolding | B & S | B & S/Destructor | 1969 | 1 x 3.0 | 144 | HW/Dist Htg |
| Kolding | B & S | B & S | 1972 | 1 x 3.0 | 144 | HW/Dist Htg |
| Korsor | B & S | B & S | 1972 | 1 x 2.0 | 48 | HW/Dist Htg |
| Nyborg | B & S | B & S/Destructor | 1970 | 1 x 3.0 | 72 | HW/Dist Htg |
| Ringsted | Rasmussen | Flynn & Emrich | 1969 | 1 x 2.0 | 48 | HW/Dist Htg |
| Roskilde | Volund A/S | Volund | 1966 | 2 x 3.0 | 144 | HW/Dist Htg |
| Rudkøbing | Rasmussen | _____ | 1966 | 1 x 1.0 | 48 | HW/Dist Htg |
| Rudkøbing | B & S | B & S | 1971 | 1 x 1.0 | 48 | HW/Dist Htg |
| Slagelse | B & S | B & S | 1971 | 1 x 3.0 | 72 | HW/Dist Htg |
| Struer | B & S | B & S/Destructor | 1967 | 1 x 2.0 | 48 | HW/Dist Htg |
| Svendborg | B & S | B & S/Destructor | 1970 | 1 x 3.5 | 84 | HW/Dist Htg |
| Sonderborg | B & S | B & S/Destructor | 1970 | 1 x 3.0 | 168 | HW/Dist Htg |
| Sonderborg | Volund A/S | Volund | 1973 | 1 x 4.0 | 168 | HW/Dist Htg |
| Taastrup | B & S | B & S/Destructor | 1967 | 1 x 3.0 | 72 | HW/Dist Htg |
| FINLAND | | | | | | |
| Helsinki | Von Roll AG | Von Roll | 1961 | 2 x 8 | 384 | Steam/Dist Htg |

| Location | Manufacturer | Grate | Start of Operation | No. Units x Capacity | Capacity Tons/Day | Heat Utilization |
|---------------------------|--------------------|-----------------------|--------------------|----------------------|-------------------|-------------------------------|
| FRANCE | | | | | | |
| Blois | Von Roll AG | Von Roll | _____ | _____ | 150 | _____ |
| Dieppe | Von Roll AG | Von Roll | | | | |
| Grenoble | Tunzini/VKW | Dusseldorf | 1972 | 2 x 6.25 | 300 | Steam/Dist Htg |
| Lyon | C.E.C. | Volund | 1963 | 2 x 10 | 720 | Steam/Industry/Power Gen |
| Lyon | C.E.C. | Volund | 1964 | 1 x 10 | 720 | Steam/Industry/Power Gen |
| Metz | C.N.I.M. | Martin | 1970 | 2 x 6 | 288 | Steam/Dist Htg/Power Gen |
| Paris Issy-les Moulineaux | C.N.I.M. | Martin | 1966 | 4 x 17 | 1632 | Steam/Dist Htg/Power Gen |
| Paris-Ivry | C.N.I.M. | Martin | 1969 | 2 x 50 | 2400 | Steam/Dist Htg/Power Gen |
| Paris-St. Quen | C.E.C. | Volund | 1953 | 4 x 8.5 | 816 | Steam/Dist Htg |
| Rennes | C.N.I.M. | Martin | 1968 | 2 x 5 | 240 | Steam/Dist Htg |
| Rouen | C.E.C. | Chain | _____ | 2 x 8 | 384 | Steam/Power Gen |
| Toulouse | Tunzini/VKW | Dusseldorf | 1968 | 2 x 8 | 384 | Steam/Power Gen |
| GERMANY | | | | | | |
| Bonn-Bad Godesberg | Wistra Ofenbau | Volund | 1967 | 2 x 5.5 | 264 | Steam/Dist Htg/Industry |
| Berlin-West | Borsig | Walzenrost | 1967 | 4 x 12.5 | 2736 | Steam/Power Gen |
| Berlin-West | Borsig | Dusseldorf | 1972 | 4 x 16.0 | 2736 | Steam/Power Gen |
| Bremen | Durr W/V | Dusseldorf | 1970 | 3 x 15.0 | 1080 | Steam/Power Gen |
| Bremerhaven | Von Roll AG | Von Roll | 1977 | 3 x 10 | 720 | Steam/Power/Dist Htg |
| Darmstadt | Von Roll AG | Von Roll | 1967 | 2 x 10 | 768 | Steam/Power/Dist Htg |
| Darmstadt | Von Roll AG | Von Roll | 1973 | 1 x 12 | _____ | Steam/Power/Dist Htg |
| Duisberg-Niederrhein | Von Roll AG | Walzenrost Dusseldorf | 1972 | 3 x 22 | 1584 | Steam/Power/Dist Htg |
| Dusseldorf | Durr W/V | Dusseldorf | 1961 | 1 x 10 | 240 | Steam/Power Gen |
| Dusseldorf | Durr W/V | Dusseldorf | 1965 | 4 x 10 | 1260 | Steam/Power Gen |
| Dusseldorf | Durr W/V | Dusseldorf | 1972 | 1 x 12.5 | 1260 | Steam/Power Gen |
| Essen-Karnap | Babcock/Durr Werke | Chain | 1961 | 5 x 20 | 2400 | Steam/Power Gen (refuse-coal) |
| Essen-Karnap | Babcock/Durr Werke | Chain | 1965 | _____ | 2400 | Steam/Power Gen (refuse-coal) |
| Frankfurt/Main | Von Roll AG | Von Roll | 1966-67 | 4 x 12.5 | 1200 | Steam/Power/Dist Htg |
| Geiselbullach | Keller-Peukert | _____ | 1975 | 1 x 6 | 144 | Steam/Sludge Drying |
| Goppingen | VKW | Dusseldorf | 1975 | 2 x 12 | 576 | Steam/Power/Dist Htg |
| Hagen | VKW | Dusseldorf | 1967 | 3 x 6 | 432 | Steam/Swimming Bath |
| Hamburg-Billbrook | Von Roll AG | Von Roll | 1958 | 2 x 6.5 | 1125 | Steam/Power/Dist Htg |
| Hamburg-Billbrook | Von Roll AG | Von Roll | 1963 | 3 x 7.3 | 1125 | Steam/Power/Dist Htg |
| Hamburg-Borsigstrasse | Martin | Martin | 1967 | 1 x 12 | 288 | Steam/Power/Dist Htg |
| Hamburg-StellingerMoor | Martin | Martin | 1972 | 2 x 24.7 | 1184 | Steam/Power/Dist Htg |
| Iserlohn | Babcock-VKW | Chain | 1970 | 2 x 8 | 768 | Steam/Power/Dist Htg |

| | | | | | | |
|------------------|-------------|------------|---------|----------|------|---|
| Iserlohn | VKW | Dusseldorf | 1974 | 1 x 16 | 768 | Steam/Power/Dist Htg |
| Kassel | Durr Werke | Dusseldorf | 1968-69 | 2 x 10 | 480 | Steam/Power/Dist Htg |
| Kampten-Allgau | Von Roll AG | Von Roll | 1975 | 1 x 4 | 96 | Steam |
| Kiel | VKW | Dusseldorf | 1975 | 2 x 5 | 240 | Steam/Dist Htg |
| Krefeld | VKW | Dusseldorf | 1975 | 2 x 12 | 576 | Steam/Dist Htg/Sludge Drying |
| Landshut | Von Roll AG | Von Roll | 1971-74 | 2 x 3 | 144 | Steam/Power |
| Leverkusen | Von Roll AG | Von Roll | 1969 | 2 x 10 | 400 | Steam/Power/Dist Htg |
| Ludwigshafen | Von Roll AG | Von Roll | 1967 | 2 x 10 | 400 | Steam/Power/Dist Htg |
| Mannheim | KSG | Chain | 1965 | 2 x 12 | 1056 | Steam/Power/Dist Htg |
| Mannheim | KSG | Chain | 1973 | 1 x 20 | 1056 | Steam/Power/Dist Htg |
| Munich-Nord 1 | Martin | Martin | 1964 | 2 x 25 | 2160 | Steam/Power/Dist Htg (refuse-pulverized coal) |
| Munich-Nord 2 | Martin | Martin | 1966 | 1 x 40 | 2160 | Steam/Power/Dist Htg (refuse-pulverized coal) |
| Munich-Sud 4 | Martin | Martin | 1969 | 1 x 40 | 1920 | Steam/Power/Dist Htg (refuse-oil-gas) |
| Munich-Sud 5 | Martin | Martin | 1971 | 1 x 40 | 1920 | Steam/Power/Dist Htg (refuse-oil-gas) |
| Neufahrn | VESO | _____ | 1970 | 1 x 3 | 72 | Steam/Dist Htg |
| Neunkirchen | Martin | Martin | 1970 | 1 x 5 | 360 | HW/Dist Htg |
| Neunkirchen | Martin | Martin | 1976 | 1 x 10 | 360 | HW/Dist Htg |
| Nurnberg | Von Roll AG | Von Roll | 1968 | 3 x 15 | 1080 | Steam/Dist Htg |
| Oberhausen | VKW | Dusseldorf | 1972 | 3 x 22 | 1584 | Steam/Power |
| Offenbach/Main | VKW | Dusseldorf | 1970 | 3 x 10 | 720 | Steam/Power/Dist Htg |
| Rosenheim | VKW | Dusseldorf | 1964 | 1 x 4.5 | 252 | Steam/Power/Dist Htg |
| Rosenheim | VKW | Dusseldorf | 1970 | 1 x 6 | 252 | Steam/Power/Dist Htg |
| Solingen | Von Roll AG | Von Roll | 1969 | 2 x 10 | 400 | Steam/Power/Dist Htg |
| Stuttgart | Martin | Martin | 1965 | 1 x 20 | 1440 | Steam/Power/Dist Htg |
| Stuttgart | VKW | Dusseldorf | 1965 | 1 x 20 | 1440 | Steam/Power/Dist Htg |
| Stuttgart | VKW | Dusseldorf | 1970 | 1 x 20 | 1440 | Steam/Power/Dist Htg |
| Zirndorf | Von Roll AG | Von Roll | 1971 | 1 x 4 | 96 | HW/Dist Htg |
| HOLLAND | | | | | | |
| Amsterdam | Martin | Martin | 1969 | 4 x 22.5 | 2160 | Steam/Power |
| Dordrecht | Martin | Martin | 1972 | 3 x 7 | 504 | Sludge Drying |
| Haag | Von Roll AG | Von Roll | 1968 | 3 x 12.5 | 1230 | Steam/Dist Htg |
| Haag | _____ | _____ | _____ | 1 x 14 | 1230 | _____ |
| Leiden | Von Roll AG | Von Roll | 1966 | 2 x 4 | 200 | Steam/Dist Htg |
| Roosendaal | B & S | B & S | 1975 | 2 x 4 | 192 | HW/Dist Htg |
| Rotterdam | Martin | Martin | 1964 | 4 x 15.6 | 1500 | Steam/Power |
| Rotterdam-Botlek | RDM | Dusseldorf | 1972 | 6 x 20 | 2800 | Steam/Power |
| ITALY | | | | | | |
| Bologna | Von Roll AG | Von Roll | _____ | _____ | 300 | _____ |
| Cava Dei Terreni | De Bart | De Bart | _____ | 2 x 1.6 | 77 | _____ |

| Location | Manufacturer | Grate | Start of Operation | No. Units x Capacity | Capacity Tons/Day | Heat Utilization |
|--------------------------|------------------|----------------|--------------------|----------------------|-------------------|------------------------------|
| ITALY (continued) | | | | | | |
| Como | De Bart | De Bart/V | 1967 | 1 x 4 | 100 | Steam |
| Genoa | Von Roll AG | Von Roll | _____ | _____ | _____ | _____ |
| Milan-Brazano | Aerimpianti | Volund | 1977 | 3 x 14 | 1020 | Steam/Power |
| Milan-Via Zama | De Bart | Volund | 1968 | 2 x 10 | 480 | Steam/Industry |
| Milan-Figino | De Bart | De Bart | _____ | 2 x 12 | 600 | Steam/Power |
| Padua | F.O.S. | Alberti-Fonsar | _____ | 1 x 5.5 | 300 | Steam/Power |
| Padua | F.O.S. | Alberti-Fonsar | _____ | 1 x 6 | 300 | Steam/Power |
| Reggio Emilia | De Bart | De Bart | _____ | 2 x 4 | 200 | Steam/Heating |
| Rome-Sozain-Cecchini | F.O.S. | Alberti-Fonsar | _____ | 6 x 4 | 600 | Steam/Industry |
| Rome-Slia-Sarr | F.O.S. | Alberti-Fonsar | _____ | 2 x 4 | 200 | Steam/Industry |
| Savona | De Bart | De Bart/V | _____ | 1 x 2.5 | 60 | _____ |
| LUXEMBOURG | | | | | | |
| Luxembourg | Martin | Martin | 1976 | 2 x 10 | 480 | Steam |
| NORWAY | | | | | | |
| Oslo | E.M.F. | Esslingen | 1967 | 2 x 6.5 | 312 | Steam/Power/Industry |
| SWEDEN | | | | | | |
| Boras | AB Landsverk | Volund | 1965 | 2 x 2.5 | 216 | Steam/Power/Dist Htg |
| Boras | AB Landsverk | Volund | 1972 | 1 x 4.0 | 216 | Steam/Power/Dist Htg |
| Borlange | P.E.M. | Impact/Stoker | 1963 | 2 x 2.0 | _____ | HW/Heating |
| Gotenborg-V. Frolunda | P.E.M. | Impact/Stoker | 1962 | 1 x 4.0 | 96 | HW/Dist Htg |
| Gotenborg-Savenas | Von Roll AG | Von Roll | 1972 | 3 x 12.5 | 900 | Steam/Dist Htg |
| Halmstad | Martin | Martin | 1971 | 2 x 5.0 | 240 | Steam/Dist Htg |
| Koping | AB Landsverk | _____ | 1972 | 2 x 5.0 | 240 | HW/Heating |
| Linkoping | AB Landsverk | Volund | 1958 | 2 x 2.5 | 240 | Steam/Power/Dist Htg |
| Linkoping | Von Roll AB | Von Roll | 1966 | 1 x 5.0 | 240 | Steam/Power/Dist Htg |
| Lulea | AB Landsverk | Volund | 1968 | 2 x 6.0 | 288 | Sludge Drying |
| Malmo-Spillepeng | Martin/Tabougnar | Martin | 1973 | 2 x 8.5 | 408 | HW/Dist Htg |
| Stockholm-Bredang | AB Norba | Destructor | 1965 | 1 x 3.0 | 72 | HW/Dist Htg |
| Stockholm-Bollmora | Von Roll AB | Von Roll | 1967 | 1 x 5.0 | 120 | HW/Dist Htg |
| Stockholm-Hogdallen | VKW | Dusseldorf | 1970 | 2 x 15.0 | 720 | Steam/Power |
| Stockholm-Huddinge | AB Norba | Destructor | 1971 | 1 x 4.0 | 96 | HW/Heating |
| Stockholm-Solna | AB Norba | Destructor | 1967 | 3 x 4.0 | 288 | HW/Dist Htg |
| Stockholm-Sundbyberg | AB Landsverk | Volund | 1954 | 2 x 2.5 | 120 | Steam/Power/Dist Htg |
| Stockholm-Taby | P.E.M. | Impact | 1960 | 1 x 3.0 | 72 | HW/Dist Htg (hospital waste) |
| Stockholm | P.E.M. | P.E.M. | 1975 | 2 x 1.0 | _____ | HW/Heating |
| Sundsvall | Volund | Volund | _____ | 2 x 17.5 | 840 | Steam/Industry |

| | | | | | | |
|-----------------------|--------------|----------------|---------|-----------|------|-------------------------------|
| Trollhattan | Norba/B & S | B & S | 1969-74 | 1 x 3.3 | 84 | HW/Dist Htg |
| Umea | Von Roll AB | Von Roll | 1970 | 2 x 4.2 | 202 | HW/Dist Htg |
| Uppsala | AB Landsverk | Volund | 1962 | 2 x 2.5 | 312 | Steam/Dist Htg |
| Uppsala | AB Landsverk | Volund | 1965 | 1 x 3.0 | 312 | Steam/Dist Htg |
| Uppsala | B & S | B & S | 1971 | 1 x 5.0 | 312 | Steam/Dist Htg |
| SWITZERLAND | | | | | | |
| Baden Brugg | F.O.S. | Alberti-Fonsar | 1970 | 2 x 4 | 200 | Steam/Power |
| Basle 1 | Von Roll AG | Volund | 1943 | 2 x 8 | 400 | Steam/Dist Htg/Industry |
| Basle 2 | Von Roll AG | Von Roll | 1969 | 2 x 12 | 600 | Steam/Power/Dist Htg/Industry |
| Bazenheid | Martin | Martin | 1976 | 2 x 3.5 | 168 | _____ |
| Berne | Von Roll AG | Von Roll | 1954 | 2 x 4 | 200 | Steam/Dist Htg/Industry |
| Buchs | F.O.S. | Alberti-Fonsar | 1974 | 1 x 5 | 120 | Steam/Power/Dist Htg |
| Colombier | F.O.S. | Alberti-Fonsar | 1971 | 2 x 5 | 240 | Steam/Power |
| Geneva | Von Roll AG | Von Roll | 1966 | 2 x 8 | 400 | Steam/Power |
| Genf | Martin | Martin | _____ | 1 x 20 | 460 | Steam |
| Hinwil-Kezo | Sulz-Martin | Martin | 1970 | 1 x 5 | 120 | Steam/Power |
| Hinwil-Kezo | Sulz-Martin | Martin | 1976 | 2 x 6.25 | 120 | Steam/Power |
| Lausanne | Von Roll AG | Von Roll | 1958 | 2 x 4 | 200 | Steam/Dist Htg |
| Limmattal | Sulz-Martin | Martin | 1971 | 2 x 2.3 | 110 | Steam/Power |
| Locarno | De Bart | De Bart/V | 1969 | 2 x 2.5 | 120 | Steam/Industry |
| Lucerne | Von Roll AB | Von Roll | 1971 | 2 x 4 | 200 | Steam/Power/Dist Htg |
| Monthey | De Bart | De Bart | _____ | 2 x 7.5 | 360 | _____ |
| Neuchatel | F.O.S. | Alberti-Fonsar | _____ | 2 x 4 | 200 | Steam/Power |
| Winterthur | Von Roll AG | Von Roll | 1965 | 2 x 4 | 200 | Steam/Power/Dist Htg |
| Winterthur | Martin | Martin | 1976 | 1 x 16.7 | 400 | Steam/Power/Dist Htg |
| Zurich 1 | Heenan-Froud | _____ | 1904 | 2 x 3.8 | 180 | Steam/Power/Dist Htg |
| Zurich 2 | Von Roll AG | Von Roll | 1969 | 2 x 11 | 970 | Steam/Power/Dist Htg |
| Zurich 2-Hagenholz | Martin | Martin | 1973 | 1 x 18.7 | 970 | Steam/Power/Dist Htg |
| Zurich-Josefstrasse | Martin | Martin | 1976 | 1 x 21.25 | 510 | Steam/Power/Dist Htg |
| UNITED KINGDOM | | | | | | |
| Coventry | H.W.P. | Martin | 1974 | 3 x 12 | | Steam/HW/Industry |
| London-Edmonton | M.B.T./VKW | Dusseidorf | 1969 | 5 x 14 | | Steam/Power |
| Mansfield | B & S | B & S | 1972 | 1 x 5.6 | | HW/Dist Htg |
| Nottingham | H.W.P. | Martin | 1973 | 2 x 11.7 | | Steam/HW/Power/Dist Htg |
| Otley | B & S | B & S | 1974 | 1 x 3.5 | | HW/Dist Htg |
| USSR | | | | | | |
| Moscow | Martin | Martin | 1975 | 2 x 8.4 | 400 | Steam/Dist Htg |
| Moscow | F.O.S. | Alberti-Fonsar | _____ | 2 x 4 | 200 | Steam/Dist Htg |
| Moscow | Volund | Volund | 1978 | 4 x 12.5 | 1200 | Steam/Dist Htg |