

*The* BULLETIN *of the*  
NATIONAL DISTRICT HEATING ASSOCIATION

VOLUME XXVI

JANUARY 1941

NUMBER 2

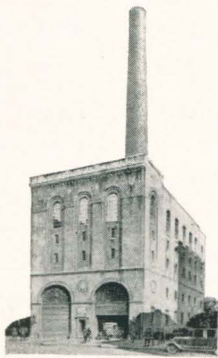


# Electric Smoke Eliminator

Installed at Lawn Street Plant\*  
Rochester, N. Y.

**R**OCHESTERIANS are justly proud of their city. Its system of parks, its fine residential sections, its preponderance of single homes, and many other features make it exceedingly attractive.

For a city of many and varied industries, Rochester is also a clean city. In spite of the fact that the supply of power and heat to its industries and commercial establishments requires the burning of over a



Lawn Street Steam Plant

thousand tons of bituminous coal every day, the emission of smoke has been kept under control. Great credit for this is due to the City Administration which has been exerting a constant pressure to this end.

In the effort to promote a clean city, the Rochester Gas & Electric Corporation, which is the largest single producer of power in the city, has been very glad to cooperate. It has consistently followed the

policy of taking advantage of each development in the art of fuel burning. These have meant more complete combustion, higher efficiency and less smoke. The use of mechanical stokers and the recent development of burning coal in the powdered form mark two important forward steps in this progress.

The most recent development of means for the elimination of smoke and dirt from power and heating boiler operation, is the application of electrical precipitation to the flue gases before they go to the stack. In this process the flue gases from the furnaces pass through a series of rods and plates between which a very high electric potential is maintained, 50,000 to 75,000 volts. This potential induces an electrical charge on any smoke or other particles no matter how small which may be present in the flue gases. These particles, because of this electrical charge, are attracted to the plates where they cling and are disposed of so that they do not discharge to the atmosphere. These precipitators will remove 90% of the smoke and dust particles which are carried by the flue gases.

Already four of these precipitators have been installed at Station 3, which is the Company's principal steam generating plant located on the Genesee River below the Central Avenue Falls. One is now being installed at the Lawn Street Steam Plant, located back of our Office Building at 89 East Avenue. The total investment involved is close to a quarter of a million dollars.

\*From "Along Our Lines" of the Rochester Gas and Electric Corporation.