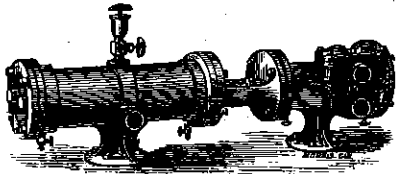


Steam Pumping Machinery,

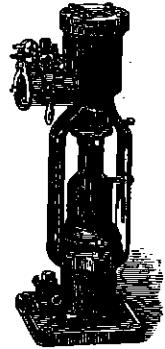
ADAPTED TO EVERY SITUATION.

AWARDED FIRST PREMIUM WHEREVER ENTERED.

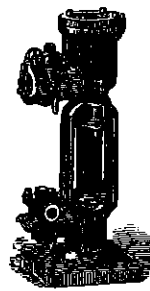


ACID AND SYRUP PUMP.

Pump Section made of Brass, adapted for Acids, Syrups, Tan Liquor, etc.

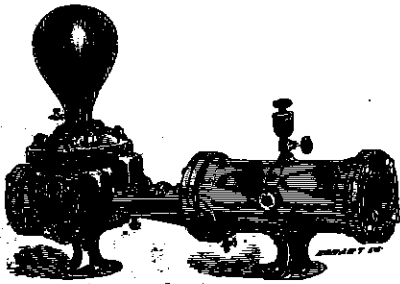


PLUNGER AIR PUMP,
For Breweries.



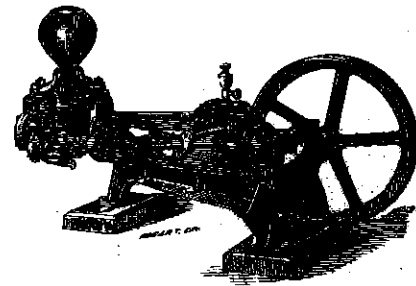
**INDEPENDENT
BOILER FEEDER.**

Works Hot and Cold Water.



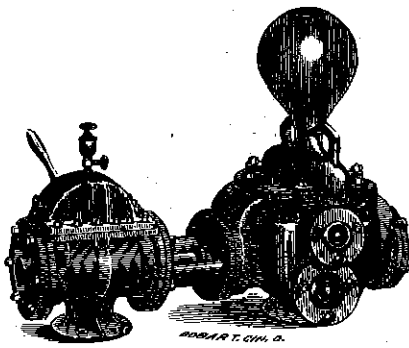
ORDINARY STYLE PISTON PUMP,

For Feeding Steam Boilers, Filling Reservoirs and Tanks, and for General Pumping.



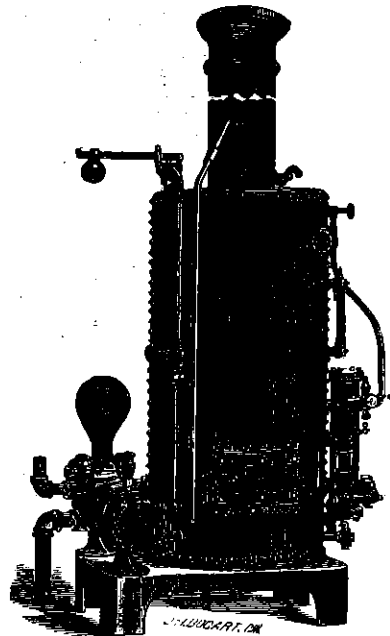
CRANK AND FLY WHEEL PUMP.

Serves for Pumping, and at the same time furnishes Power for other Work.



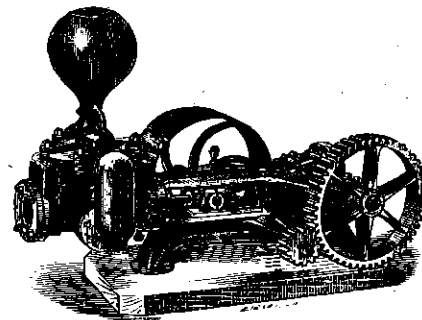
HEAVY STYLE PISTON PUMP,

For Draining Mines, Feeding Large Batteries of Steam Boilers, Extinguishing Fires, Supplying Villages, and all kinds of Heavy Pumping.



PORTABLE BOILER AND PUMP

For R. R. Water Stations, etc.



POWER PUMP,

Adapted to receive Power from a line of Shafting Suitable for Establishments run by Water.

COPE & MAXWELL M'FG CO.

Works:

Third St., near Hydraulic,
HAMILTON, O.

SEND FOR ILLUSTRATED CATALOGUE

Office:

118 to 122 East Second St.,
CINCINNATI, O.